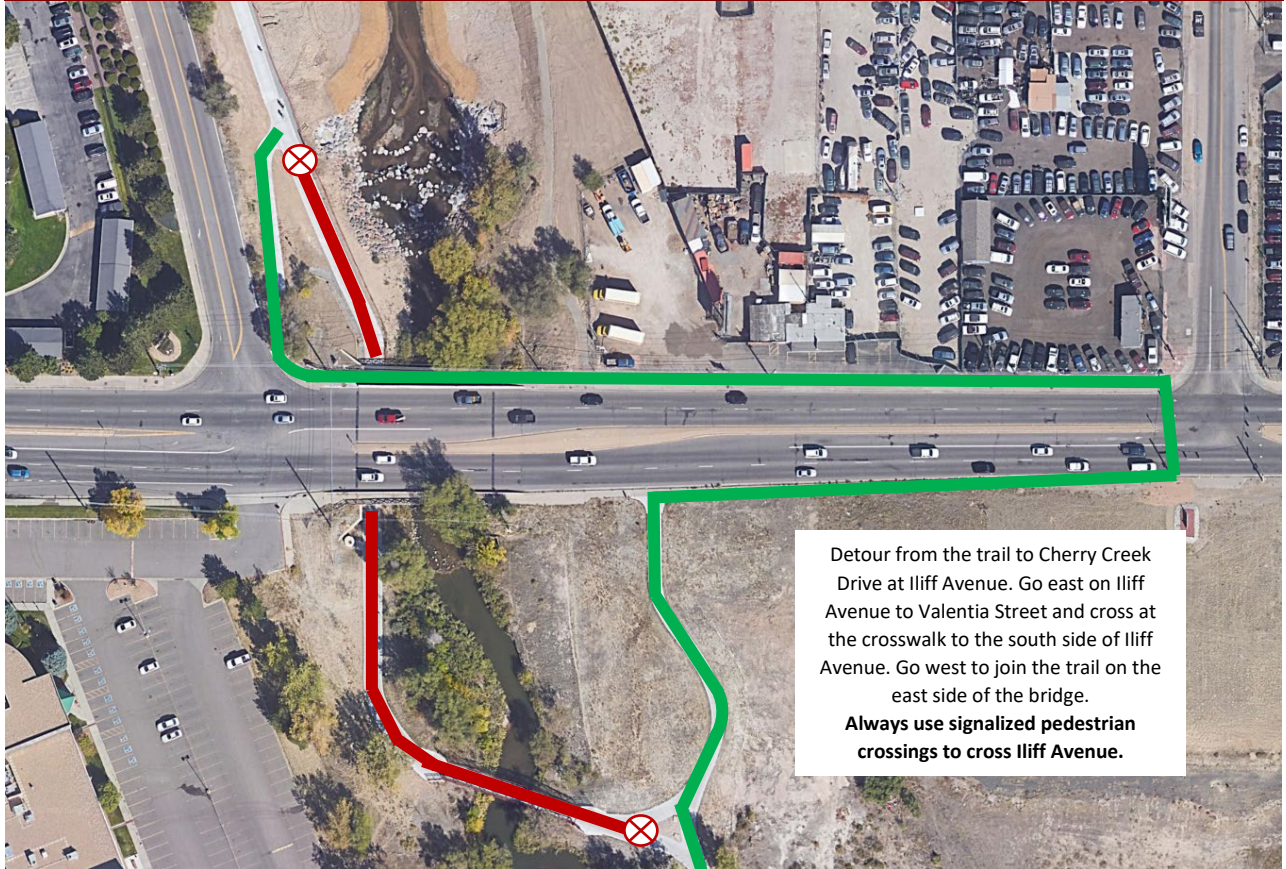


Iliff Avenue Corridor Improvement Project

Cherry Creek Trail Closure under Iliff Avenue



ARAPAHOE COUNTY
PUBLIC WORKS & DEVELOPMENT



Detour from the trail to Cherry Creek Drive at Iliff Avenue. Go east on Iliff Avenue to Valentia Street and cross at the crosswalk to the south side of Iliff Avenue. Go west to join the trail on the east side of the bridge.
Always use signalized pedestrian crossings to cross Iliff Avenue.