

ARAPAHOE COUNTY COLORADO

PERMANENT PARCEL IDENTIFICATION

2077-16-3-02-002

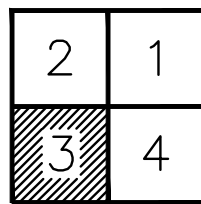
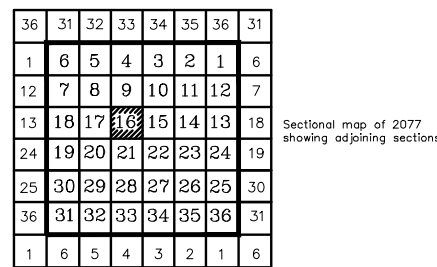
1. Arbitrary state numbering for township & range 2077

2. Section number 16

3. Quarter section number 3

4. Arbitrary block number 02

5. Arbitrary parcel number 002 002



ARAPAHOE COUNTY

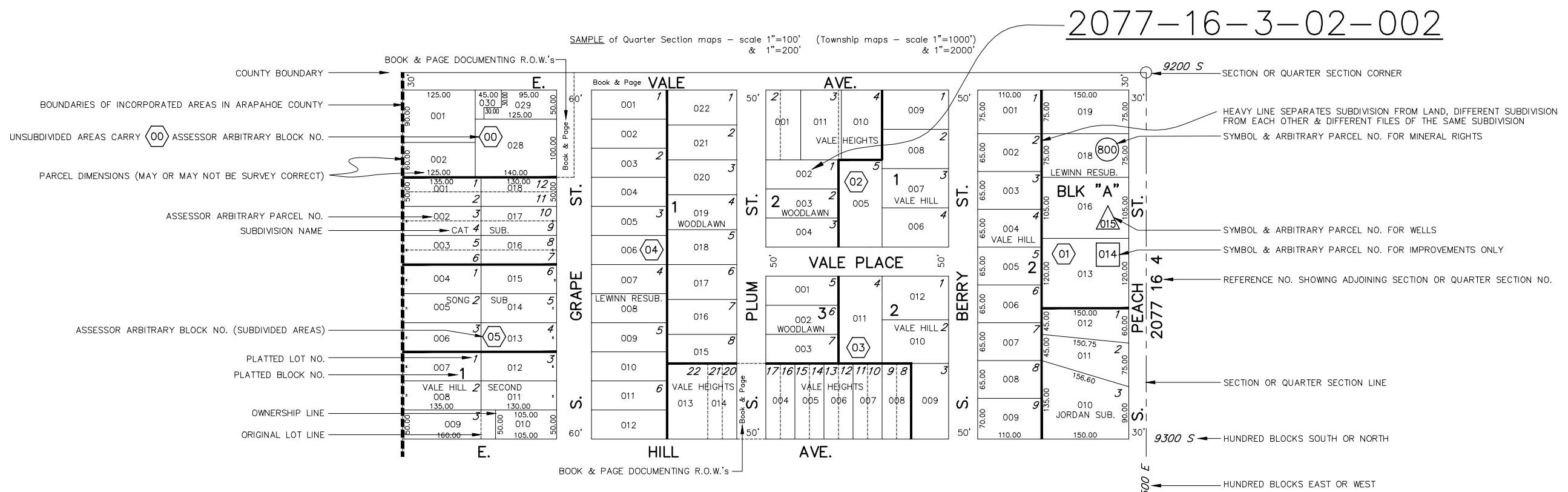
	R68W	R67W	R66W	R65W	R64W	R63W	R62W	R61W	R60W	R59W	R58W	R57W	
T4S	1971	1973	1975	1977	1979	1981	1983	1985	1987	1989	1991	1993	T4S
T5S	2077	2075	2073	2071	2069	2067	2065	2063	2061	2059	2057	2055	T5S

DISCLAIMER

ARAPAHOE COUNTY MAKES NO REPRESENTATION OR WARRANTY AS TO THE ACCURACY OF THESE BASE MAPS, AND ASSUMES NO RESPONSIBILITY OR LIABILITY TO ANY USER. THESE BASE MAPS ARE NOT LEGAL DOCUMENTS. THEY ARE INTENDED TO SERVE AS AN AID IN GRAPHIC REPRESENTATION ONLY. THESE MAPS ARE NOT SURVEY DRAWINGS AND ARE ONLY DRAWN TO SKETCH ACCURACY.

LEGEND

- 2077-16-3-02-002 PPI (PERMANENT PARCEL IDENTIFICATION)
- ASSESSOR ARBITRARY BLOCK NO. (UNSUBDIVIDED AREAS)
 - ASSESSOR ARBITRARY BLOCK NO. (SUBDIVIDED AREAS)
 - SYMBOL & ARBITRARY PARCEL NO. FOR MINERAL RIGHTS
 - SYMBOL & ARBITRARY PARCEL NO. FOR WELLS
 - SYMBOL & ARBITRARY PARCEL NO. FOR IMPROVEMENTS ONLY
 - 2** PLATTED LOT NO.
 - 3** PLATTED BLOCK NO.
 - 001 ASSESSOR ARBITRARY PARCEL NO.
 - 125.00 LOT DIMENSION
 - 60' STREET WIDTH
 - M/L MORE OR LESS
 - ← DIRECTION TO WHICH MAP HAS PARCEL ID INFORMATION
 - QUARTER SECTION CORNER
 - SAME AS
 - COUNTY BOUNDARY
 - BOUNDARIES OF INCORPORATED AREAS IN ARAPAHOE COUNTY
 - ORIGINAL SUBDIVISION LOT LINE
 - OWNERSHIP LINE
 - SEPARATES SUBDIVISION FROM LAND, DIFFERENT SUBDIVISION FROM EACH OTHER & DIFFERENT FILES OF THE SAME SUBDIVISION
 - SECTION OR QUARTER SECTION LINE
 - COUNTY ROADWAY EASEMENT
 - CREEK, STREAM OR GULCH
 - WATER FEATURES



NOTE: sample drawn to actual size (1"=200') and is theoretical - not to be found in Arapahoe County